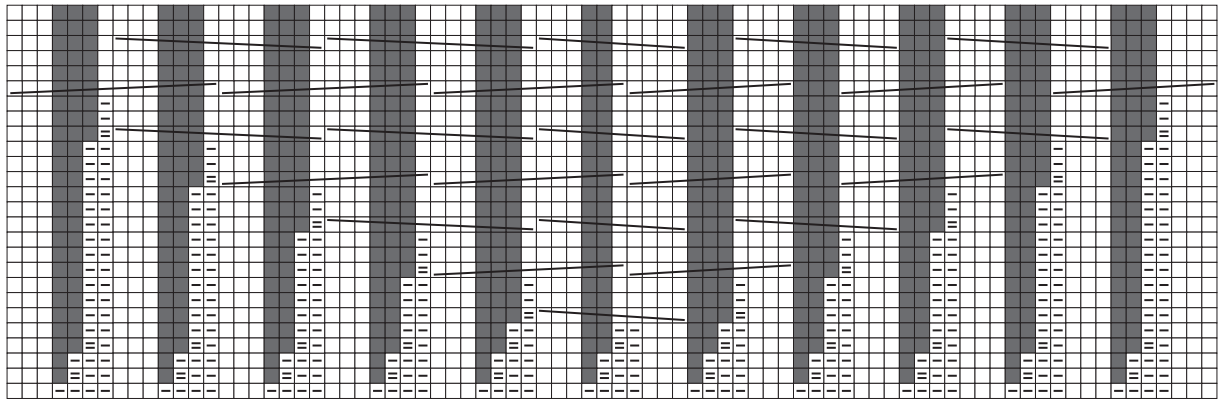
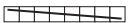







211_07_str



MUSTER III / PATTERN III / POINT III / STEKENPATROON III



- = keine M
- = 1 M re
- ▣ = 1 M li
- ▤ = 2 M li zus-str
-  = 8 M nach li kreuzen (4 M auf 1 Hilfs-N vor die Arb legen, die folg 4 M re, dann die M der Hilfs-N re str)
-  = 8 M nach re kreuzen (4 M auf 1 Hilfs-N hinter die Arb legen, die folg 4 M re, dann die M der Hilfs-N re str)

- = no st
- = k1
- ▣ = p1
- ▤ = p2 tog
-  = cross 8 sts towards left (put 4 sts on st holder held in front of work, k the foll 4 sts, then k the sts on st holder)
-  = cross 8 sts towards right (put 4 sts on st holder held in back of work, k the foll 4 sts, then k the sts on st holder)

- = néant
- = 1 m end
- ▣ = 1 m env
- ▤ = 2 m ens à l'env
-  = croiser 8 m vers la gauche (gl 4 m sur 1 aig auxil par-devant, tric à l'end les 4 m suiv, puis les m de l'aig auxil à l'end)
-  = croiser 8 m vers la droite (gl 4 m sur 1 aig auxil par-derrrière, tric à l'end les 4 m suiv puis les m de l'aig auxil à l'end)

- = geen st
- = 1 r
- ▣ = 1 av
- ▤ = 2 st av samen br
-  = 8 st naar links kruisen (4 st op hulplnd voor werk, de 4 volg st r br, daarna de st van de hulplnd r br)
-  = 8 st naar rechts kruisen (4 st op hulplnd achter werk, de 4 volg st r br, daarna de st van de hulplnd r br)