

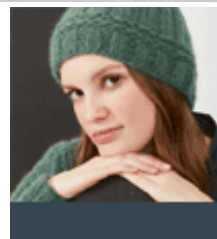
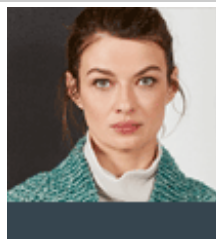
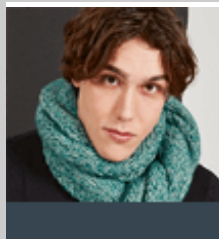
LANG

Y A R N S

Quality since 1867



NEWSLETTER



#51 December 2021



SOHO

New shades for even more colour explosions. The shades of SOHO are unique and always surprising. SOHO is a chain-yarn which means that its volume and airiness are in perfect balance.

SOHO

80 % Virgin wool (Merino fine) / 12 % Nylon / 8 % Acrylic

180 m / 100 g



We recommend needle size 5½ - 6 mm to obtain a tension of 16 sts x 23 rows to 10 x 10 cm.

A crochet pattern for you

Download the crochet pattern for the "FRIENDS SHIPS SLIPPERS" by WOOLADDICTS for free until December 21st from our Pattern Shop, with the code: **FRIEND**.



Have a great weekend,
Best wishes, Your LANGYARNS Team



w w w . l a n g y a r n s . c o m

Newsletter abmelden | désabonner |
unsubscribe

info@langyarns.com

