

HAPPILY
KNITTING



HONEY,
COMB
your
HERITAGE
DENDENNIS & MR. KNITBEAR

LANG
Y A R N S



SWATCH #HONEYCOMBKAL

MATERIAL:

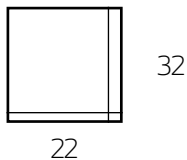
1 long, straight knitting needle of 40 cm

1 circular needle of at least 80 cm or 2 long, straight knitting needles of 40 cm

Knit a sample pattern to get used to the double face knitting technique and to see if your gauge is correct. We used 4 mm needles with MERINO 120 and 3.5 mm needles with ATLANTIS.

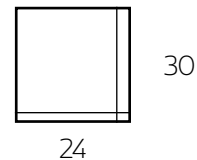
Gauge (10x10 cm)

Merino 120



Gauge (10x10 cm)

Atlantis



The correct width of the scarf is not particularly important, but it is still worth knitting the sample to see if you like the stitch pattern with the chosen needle size, or if you would like to make an adjustment.

SWATCH WITH SIMPLE EDGE

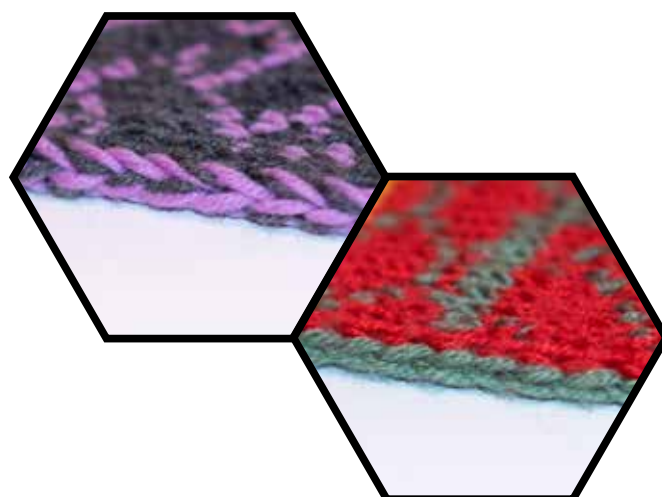
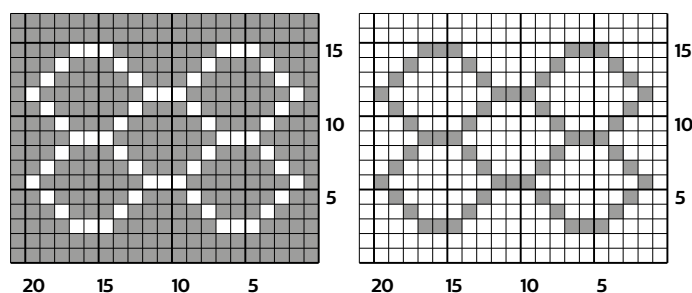
Work a slip knot with the main colour (MC) and the contrast colour (CC) together (counts as 2 stitches). Now cast on alternately one knit stitch with the HF and one purl stitch with the CC until you have a total of 44 stitches on your needle. Then make another stitch, with both colours together. Turn your work. (= 46 stitches)
From now on, always knit the first two loops and the last two loops of a row together, using both yarns.

These edge stitches are not shown in the chart!

(The distribution of the stitches for the cast-on is shown in the first row of the chart).

2nd row: Knit an edge stitch. *Knit 1 in CC, place both working yarns between the needles, purl 1 in MC, place both working threads between the needles*. Repeat from * to * until there are 2 stitches left on the needle. Knit an edge stitch.

Continue knitting according to the chart (from row 3) with the edge stitches as established.



SWATCH WITH PRETTY EDGE

Work a slip knot with the main colour (MC) and the contrast colour (CC) together (counts as 2 stitches). Make sure that the loop of the HF slips onto the needle first. Now cast on alternately one knit stitch with the HF and one purl stitch with the CC until you have a total of 41 stitches on your needle. Then make another stitch, with both colours together. You now have one more stitch than shown in the knitting instructions. (= 43 stitches)
(The distribution of the stitches for the cast-on is shown in the first row of the chart).

Even rows:

(The yarns are behind the knitted piece)

Knit the first stitch in MC. Knit according to chart (row 2) until there are 2 stitches left on the needle. Slip the last two stitches knit wise, placing the yarn in MC in

front of the work and the yarn in CC behind the work. This way they are correctly positioned for the next row. Turn your work.

Odd rows:

(You start with the yarn in MC behind the work and the yarn in CC in front of the work).

Knit the first stitch in MC and leave the yarn on the back of your knitting. Knit according to the chart (row 3) until there are 2 stitches left on the needle. (One purl stitch in CC and one knit stitch in MC). Slip the last two stitches knit wise and place both yarns at the front of the work.

Continue knitting according to the chart (from row 4). And work the edge stitches as established.